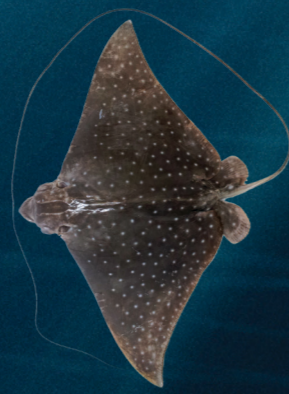


Rays

in Southeast Asian Region



Scientific name : *Aetobatus ocellatus* (Kuhl, 1823)
 Common name : Spotted eagle ray
 DW at birth and DW at maximum size : 11–300 cm
 Depth distribution : continental shelf
 Conservation status : IUCN Red List 2015: Vulnerable



Scientific name : *Hemitrygon akajei* (Müller and Henle, 1841)
 Common name : Red stingray
 DW at birth and DW at maximum size : 16–66 cm
 Depth distribution : inshore to 50 m
 Conservation status : IUCN Red List 2006: Near Threatened



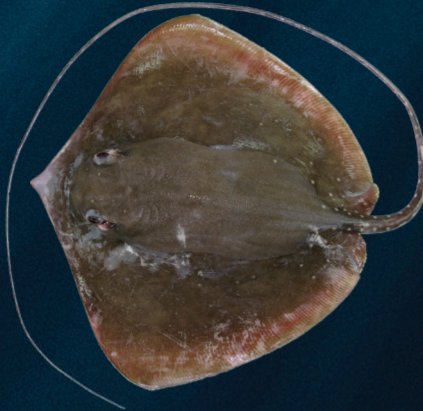
Scientific name : *Telatrygon zugei* (Müller and Henle, 1841)
 Common name : Pale-edge sharpnose ray
 DW at birth and DW at maximum size : 7–29 cm
 Depth distribution : inshore waters to 100 m
 Conservation status : IUCN Red List 2006: Near Threatened



Scientific name : *Gymnura japonica* (Temminck and Schlegel, 1850)
 Common name : Japanese butterfly ray
 DW at birth and DW at maximum size : 20–145 cm
 Depth distribution : inshore waters
 Conservation status : IUCN Red List 2007: Data Deficient



Scientific name : *Gymnura poecilura* (Shaw, 1804)
 Common name : Longtail butterfly ray
 DW at birth and DW at maximum size : 20–104 cm
 Depth distribution : inshore to 30 m
 Conservation status : IUCN Red List 2013: Near Threatened



Scientific name : *Maculabatis gerrardi* (Gray, 1851)
 Common name : Whitespotted whipray
 DW at birth and DW at maximum size : 13–116 cm
 Depth distribution : inshore to 60 m
 Conservation status : IUCN Red List 2013: Vulnerable



Scientific name : *Brevitrygon imbricata* (Bloch and Schneider, 1801)
 Common name : Bengal whipray
 DW at birth and DW at maximum size : 8–23 cm
 Depth distribution : inshore to 55 m
 Conservation status : IUCN Red List 2013: Data Deficient



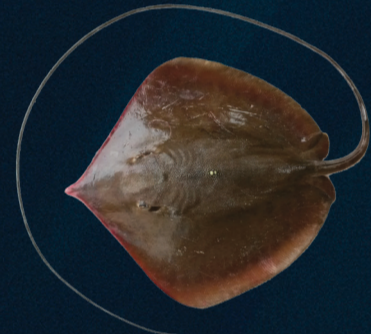
Scientific name : *Pateobatis jenkinsii* (Annandale, 1909)
 Common name : Jenkin's whipray
 DW at birth and DW at maximum size : 23–150 cm
 Depth distribution : inshore to 90 m
 Conservation status : IUCN Red List 2015: Vulnerable



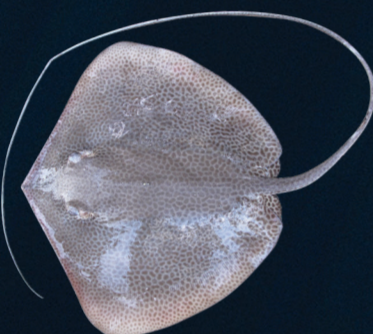
Scientific name : *Himantura leoparda* (Manjaji-Matsumoto & Last, 2008)
 Common name : Leopard whipray
 DW at birth and DW at maximum size : 20–140 cm
 Depth distribution : inshore to 70 m
 Conservation status : IUCN Red List 2015: Vulnerable



Scientific name : *Maculabatis pastinacoides* (Bleeker, 1852)
 Common name : Round whipray
 DW at birth and DW at maximum size : 15–86 cm
 Depth distribution : inshore waters
 Conservation status : IUCN Red List 2013: Vulnerable



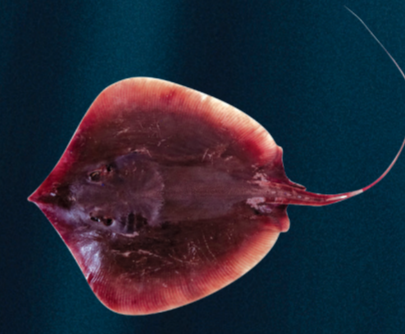
Scientific name : *Pateobatis uarnacoides* (Bleeker, 1852)
 Common name : Whitenose whipray
 DW at birth and DW at maximum size : 18–119 cm
 Depth distribution : offshore beyond 30 m
 Conservation status : IUCN Red List 2013: Vulnerable



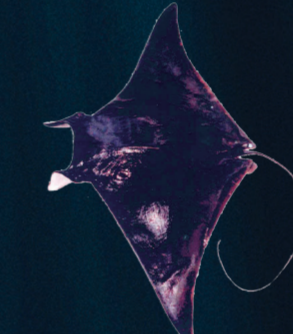
Scientific name : *Himantura uarnak* (Gmelin, 1789)
 Common name : Coach whipray
 DW at birth and DW at maximum size : 21–160 cm
 Depth distribution : inshore to 50 m
 Conservation status : IUCN Red List 2013: Vulnerable



Scientific name : *Himantura undulata* (Bleeker, 1852)
 Common name : Honeycomb whipray
 DW at birth and DW at maximum size : 26–130 cm
 Depth distribution : inshore to insular shelf
 Conservation status : IUCN Red List 2013: Vulnerable



Scientific name : *Brevitrygon heterura* (Bleeker, 1852)
 Common name : Dwarf whipray
 DW at birth and DW at maximum size : 8–24 cm
 Depth distribution : inshore to 50 m
 Conservation status : IUCN Red List 2009: Near Threatened



Scientific name : *Mobula mobular* (Bonnaterre, 1788)
 Common name : Giant devilray
 DW at birth and DW at maximum size : 90–520 cm
 Depth distribution : Pelagic (inshore and offshore)
 Conservation status : CITES Appendix II
 IUCN Red List 2018: Endangered



Scientific name : *Mobula kuhlii* (Müller and Henle, 1841)
 Common name : Kuhl's devilray
 DW at birth and DW at maximum size : 31–135 cm
 Depth distribution : inshore waters
 Conservation status : CITES Appendix II
 IUCN Red List 2020: Endangered



Scientific name : *Mobula tarapacana* (Philippi, 1892)
 Common name : Sicklefin devilray
 DW at birth and DW at maximum size : 105–370 cm
 Depth distribution : pelagic (inshore and offshore)
 Conservation status : CITES Appendix II
 IUCN Red List 2020: Endangered



Scientific name : *Mobula thurstoni* (Lloyd, 1908)
 Common name : Bentfin devilray
 DW at birth and DW at maximum size : 65–189 cm
 Depth distribution : pelagic (inshore shallower than 100 m)
 Conservation status : CITES Appendix II
 IUCN Red List 2018: Endangered



Scientific name : *Neotrygon orientalis* Last, White & Séret, 2016
 Common name : Oriental bluespotted maskray
 DW at birth and DW at maximum size : 12–38 cm
 Depth distribution : inshore to insular shelf
 Conservation status : Not evaluated



Scientific name : *Rhinobatos schlegelii* Müller & Henle, 1841
 Common name : Bottlenose guitarfish
 Body size (TL) : attains 100 cm
 Depth distribution : continental to insular shelves
 Conservation status : IUCN Red List 2013: Vulnerable



Scientific name : *Rhinobatos penggali* Last, White & Fahmi, 2006
 Common name : Indonesia guitarfish
 Body size (TL) : 22–99 cm
 Depth distribution : inshore on inner insular shelf
 Conservation status : IUCN Red List 2013: Vulnerable



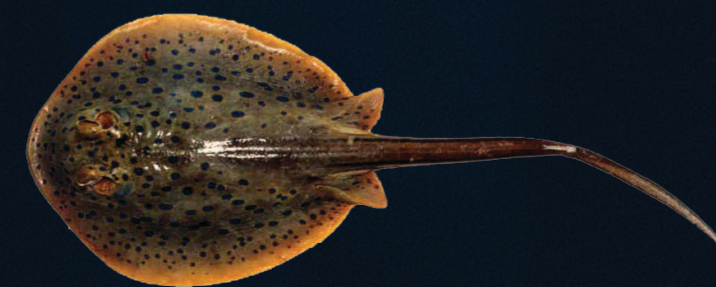
Scientific name : *Rhinoptera javanica* Müller & Henle, 1841
 Common name : Javan cownose ray
 DW at birth and DW at maximum size : 30–165 cm
 Depth distribution : inshore waters
 Conservation status : IUCN Red List 2013: Vulnerable



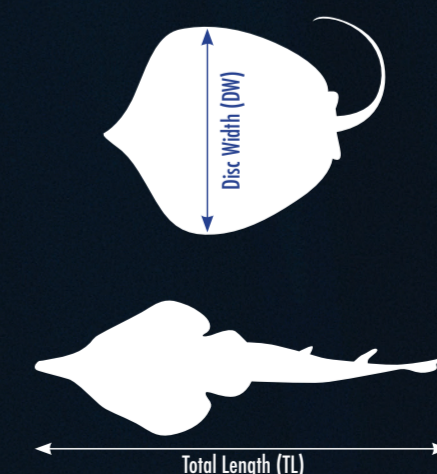
Scientific name : *Rhinoptera jayakari* Boulenger, 1895
 Common name : Shorttail cownose ray
 DW at birth and DW at maximum size : 20–90 cm
 Depth distribution : inshore and offshore waters
 Conservation status : Not evaluated



Scientific name : *Rhynchobatus australiae* Whitley, 1939
 Common name : Bottlenose wedgefish
 Body size (TL) : 28–300 cm TL
 Depth distribution : continental shelf
 Conservation status : CITES Appendix II
 IUCN Red List 2018: Critically Endangered



Scientific name : *Taeniura lymna* (Forskåll, 1775)
 Common name : Bluespotted fantail ray
 DW at birth and DW at maximum size : 13–35 cm
 Depth distribution : inshore and around coral reefs
 Conservation status : IUCN Red List 2013: Near Threatened



This poster was produced and photography provided by SEAFDEC Marine Fishery Resources Development and Management Department and Training Department, with funding support from the regional collaborative program between SEAFDEC and CITES Secretariat 2018–2019. © 2020 SEAFDEC (www.seafdec.org)