

Pocket Field Guide: Sharks and Rays in Southeast Asian Region

Rays

in Southeast Asian Region



PREPARATION AND DISTRIBUTION OF THIS FIELD GUIDE

The Pocket Field Guide: Sharks and Rays in Southeast Asian Region was prepared by the Secretariat of the Southeast Asian Fisheries Development Center (SEAFDEC) in collaboration with SEAFDEC Marine Fishery Resources Development and Management Department (MFRDMD) and SEAFDEC Training Department (TD). This Field Guide is distributed to the SEAFDEC Member Countries, SEAFDEC Secretariat and Departments.

NOTICE OF COPYRIGHT

This publication may not be reproduced, in whole or in part, by any method or process, without written permission from the copyright holder. Applications for such permission with a statement of the purpose and extent of the reproduction desired should be made through and address to:

SEAFDEC Secretariat
Suraswadi Building
Kasetsart Campus
P.O.Box 1046, Kasetsart Post Office
Bangkok 10903, Thailand.

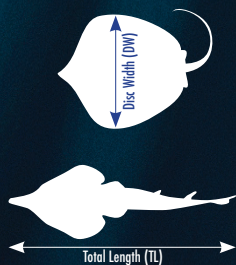
All rights reserved
SEAFDEC 2020

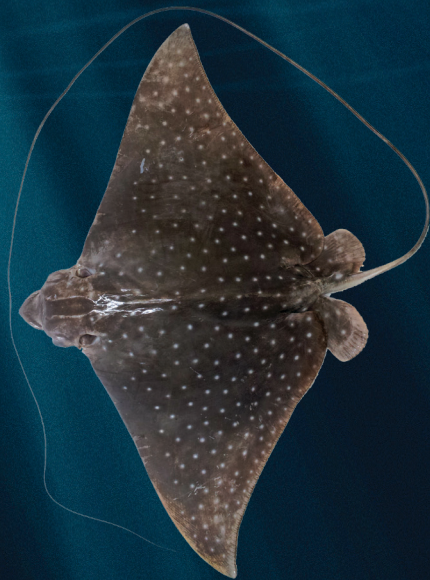
PREFACE

This Pocket Field Guide: Sharks and Rays in Southeast Asian Region was prepared through a series of activities at national/regional levels aimed at supporting SEAFDEC Member Countries in the implementation of CITES provisions with regard to sharks/ rays, under the collaborative program between SEAFDEC and its Member Countries with funding support from CITES Secretariat. The information used in this Field Guide have been sourced from the outputs of the abovementioned activities. This field guide is a book designed to help the readers (e.g. fisheries officers, fisheries researchers, fisheries lecturers/student, etc.) to identify sharks and rays that are commonly found in the Southeast Asian region.

Content

Spotted eagle ray	1
Red stingray	2
Pale-edge sharpnose ray	3
Japanese butterfly ray	4
Longtail butterfly ray	5
Whitespotted whipray	6
Bengal whipray	7
Jenkin's whipray	8
Leopard whipray	9
Round whipray	10
Whitenose whipray	11
Coach whipray	12
Honeycomb whipray	13
Dwarf whipray	14
Giant devilray	15
Kuhl's devilray	16
Sicklefin devilray	17
Bentfin devilray	18
Oriental bluespotted maskray	19
Bottlenose guitarfish	20
Indonesia guitarfish	21
Javan cownose ray	22
Shorttail cownose ray	23
Bottlenose wedgefish	24
Bluespotted fantail ray	25





Scientific name :	<i>Aetobatus ocellatus</i> (Kuhl, 1823)
Common name :	Spotted eagle ray
DW at birth and DW at maximum size :	11-300 cm
Depth distribution :	continental shelf
Conservation status :	IUCN Red List 2015: Vulnerable



Scientific name : *Hemitrygon akajei* (Müller and Henle, 1841)
Common name : Red stingray
**DW at birth and
DW at maximum size :** 16– 66 cm
Depth distribution : inshore to 50 m
Conservation status : IUCN Red List 2006: Near Threatened



Scientific name :	<i>Telatrygon zugei</i> (Müller and Henle, 1841)
Common name :	Pale-edge sharpnose ray
DW at birth and DW at maximum size :	7-29 cm
Depth distribution :	inshore waters to 100 m
Conservation status :	IUCN Red List 2006: Near Threatened



Scientific name :	<i>Gymnura japonica</i> (Temminck and Schlegel, 1850)
Common name :	Japanese butterfly ray
DW at birth and DW at maximum size :	20–145 cm
Depth distribution :	inshore waters
Conservation status :	IUCN Red List 2007: Data Deficient



Scientific name :	<i>Gymnura poecilura</i> (Shaw, 1804)
Common name :	Longtail butterfly ray
DW at birth and DW at maximum size :	20-104 cm
Depth distribution :	inshore to 30 m
Conservation status :	IUCN Red List 2013: Near Threatened



Scientific name :	<i>Maculabatis gerrardi</i> (Gray, 1851)
Common name :	Whitespotted whipray
DW at birth and DW at maximum size :	13–116 cm
Depth distribution :	inshore to 60 m
Conservation status :	IUCN Red List 2013: Vulnerable



Scientific name :	<i>Brevitrygon imbricata</i> (Bloch and Schneider, 1801)
Common name :	Bengal whipray
DW at birth and DW at maximum size :	8–23 cm
Depth distribution :	inshore to 55 m
Conservation status :	IUCN Red List 2013: Data Deficient



Scientific name :	<i>Pateobatis jenkinsii</i> (Annandale, 1909)
Common name :	Jenkin's whipray
DW at birth and DW at maximum size :	23–150 cm
Depth distribution :	inshore to 90 m
Conservation status :	IUCN Red List 2015: Vulnerable



Scientific name :	<i>Himantura leoparda</i> Manjaji–Matsumoto & Last, 2008
Common name :	Leopard whipray
DW at birth and DW at maximum size :	20–140 cm
Depth distribution :	inshore to 70 m
Conservation status :	IUCN Red List 2015: Vulnerable



Scientific name :	<i>Maculabatis pastinacoides</i> (Bleeker, 1852)
Common name :	Round whipray
DW at birth and DW at maximum size :	15–86 cm
Depth distribution :	inshore waters
Conservation status :	IUCN Red List 2013: Vulnerable



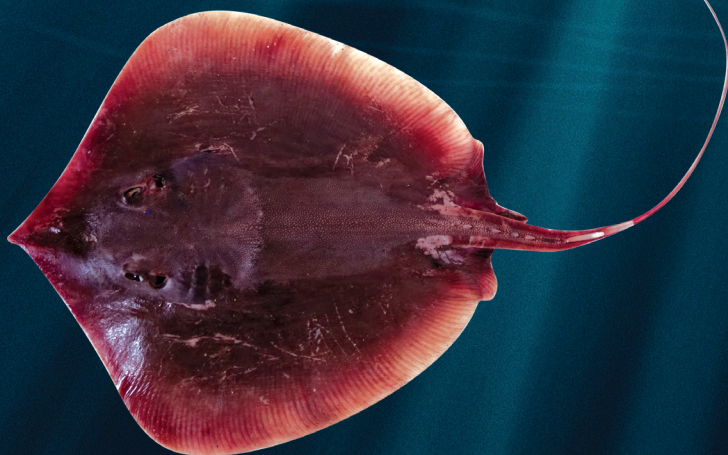
Scientific name :	<i>Pateobatis uarnacoides</i> (Bleeker, 1852)
Common name :	Whitenose whipray
DW at birth and DW at maximum size :	18–119 cm
Depth distribution :	offshore beyond 30 m
Conservation status :	IUCN Red List 2013: Vulnerable



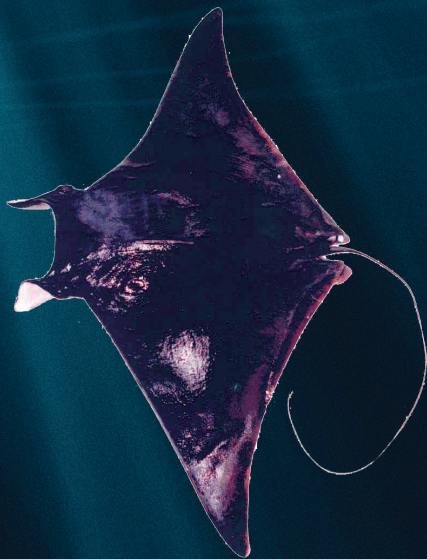
Scientific name :	<i>Himantura uarnak</i> (Gmelin, 1789)
Common name :	Coach whipray
DW at birth and DW at maximum size :	21-160 cm
Depth distribution :	inshore to 50 m
Conservation status :	IUCN Red List 2013: Vulnerable



Scientific name :	<i>Humantura undulata</i> (Bleeker, 1852)
Common name :	Honeycomb whipray
DW at birth and DW at maximum size :	26–130 cm
Depth distribution :	inshore to insular shelf
Conservation status :	IUCN Red List 2013: Vulnerable



Scientific name :	<i>Brevitrygon heterura</i> (Bleeker, 1852)
Common name :	Dwarf whipray
DW at birth and DW at maximum size :	8–24 cm
Depth distribution :	inshore to 50 m
Conservation status :	IUCN Red List 2009: Near Threatened



Scientific name :	<i>Mobula mobular</i> (Bonnaterre, 1788)
Common name :	Giant devilray
DW at birth and DW at maximum size :	90–520 cm
Depth distribution :	Pelagic (inshore and offshore)
Conservation status :	CITES Appendix II IUCN Red List 2018: Endangered



Scientific name :	<i>Mobula kuhlii</i> (Müller and Henle, 1841)
Common name :	Kuhl's devilray
DW at birth and DW at maximum size :	31-135 cm
Depth distribution :	inshore waters
Conservation status :	CITES Appendix II IUCN Red List 2020: Endangered



Scientific name :	<i>Mobula tarapacana</i> (Philippi, 1892)
Common name :	Sicklefin devilray
DW at birth and DW at maximum size :	105–370 cm
Depth distribution :	pelagic (inshore and offshore)
Conservation status :	CITES Appendix II IUCN Red List 2020: Endangered



Scientific name :	<i>Mobula thurstoni</i> (Lloyd, 1908)
Common name :	Bentfin devilray
DW at birth and DW at maximum size :	65–189 cm
Depth distribution :	pelagic (inshore shallower than 100 m)
Conservation status :	CITES Appendix II IUCN Red List 2018: Endangered



Scientific name :	<i>Neotrygon orientalis</i> Last, White & Séret, 2016
Common name :	Oriental bluespotted maskray
DW at birth and DW at maximum size :	12–38 cm
Depth distribution :	inshore to insular shelf
Conservation status :	Not evaluated



Scientific name :	<i>Rhinobatos schlegelii</i> Müller & Henle, 1841
Common name :	Bottlenose guitarfish
Body size (TL) :	attains 100 cm
Depth distribution :	continental to insular shelves
Conservation status :	IUCN Red List 2013: Vulnerable



Scientific name :	<i>Rhinobatos penggali</i> Last, White & Fahmi, 2006
Common name :	Indonesia guitarfish
Body size (TL) :	22–99 cm
Depth distribution :	inshore on inner insular shelf
Conservation status :	IUCN Red List 2013: Vulnerable



Scientific name :	<i>Rhinoptera javanica</i> Müller & Henle, 1841
Common name :	Javan cownose ray
DW at birth and DW at maximum size :	30–165 cm
Depth distribution :	inshore waters
Conservation status :	IUCN Red List 2013: vulnerable



Scientific name :	<i>Rhinoptera jayakari</i> Boulenger, 1895
Common name :	Shorttail cownose ray
DW at birth and DW at maximum size :	20- 90 cm
Depth distribution :	inshore and offshore waters
Conservation status :	Not evaluated



Scientific name :	<i>Rhynchobatus australiae</i> Whitley, 1939
Common name :	Bottlnose wedgefish
Body size (TL) :	28–300 cm TL
Depth distribution :	continental shelf
Conservation status :	CITES Appendix II IUCN Red List 2018: Critically Endangered



Scientific name :	<i>Taeniura lymma</i> (Forsskål, 1775)
Common name :	Bluespotted fantail ray
DW at birth and DW at maximum size :	13–35 cm
Depth distribution :	inshore and around coral reefs
Conservation status :	IUCN Red List 2013: Near Threatened